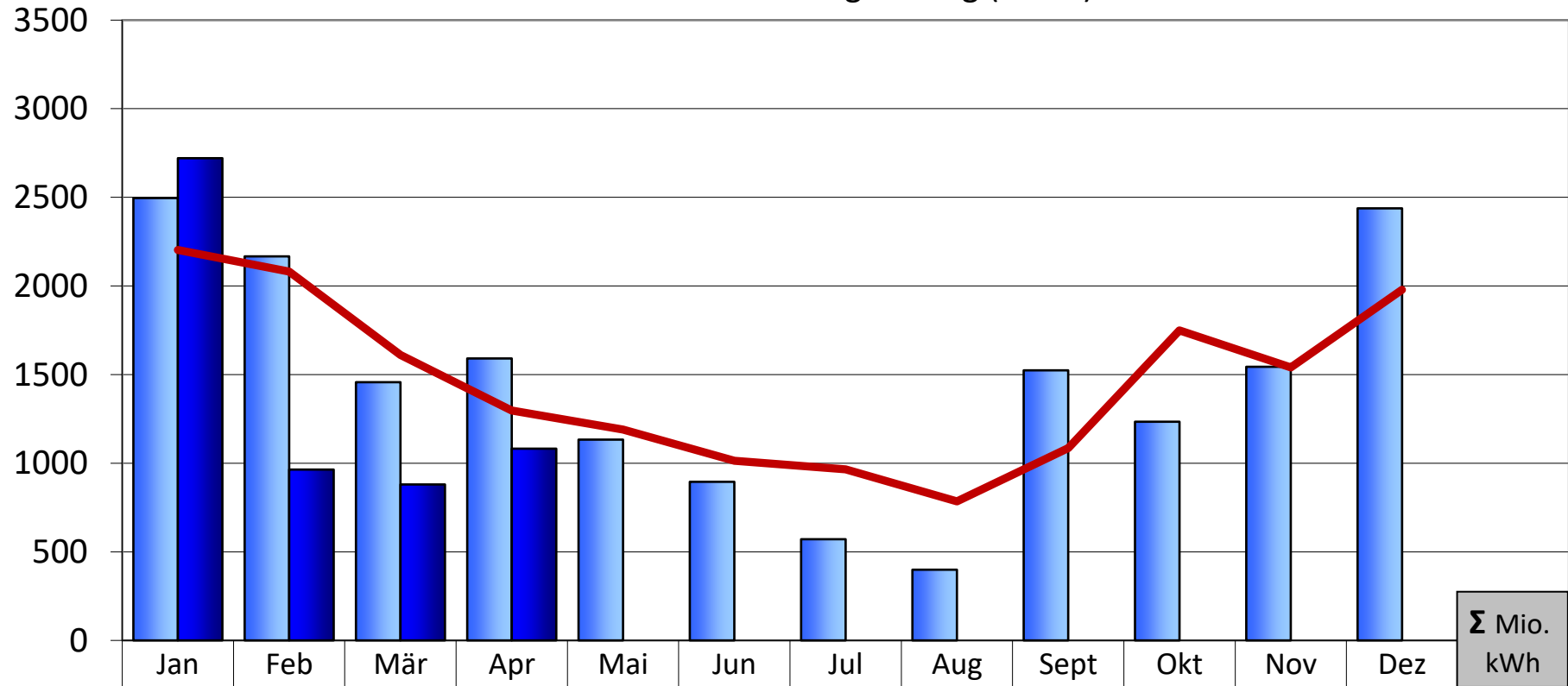


Bürgerwindpark Biederbach

Monatlicher Energieertrag (MWh)



2024	2496	2167	1457	1591	1133	895	571	399	1524	1234	1544	2438	17,45
2025	2721	964	880	1082									5,65
Planwert	2203	2082	1610	1297	1190	1014	965	785	1086	1750	1540	1978	17,5