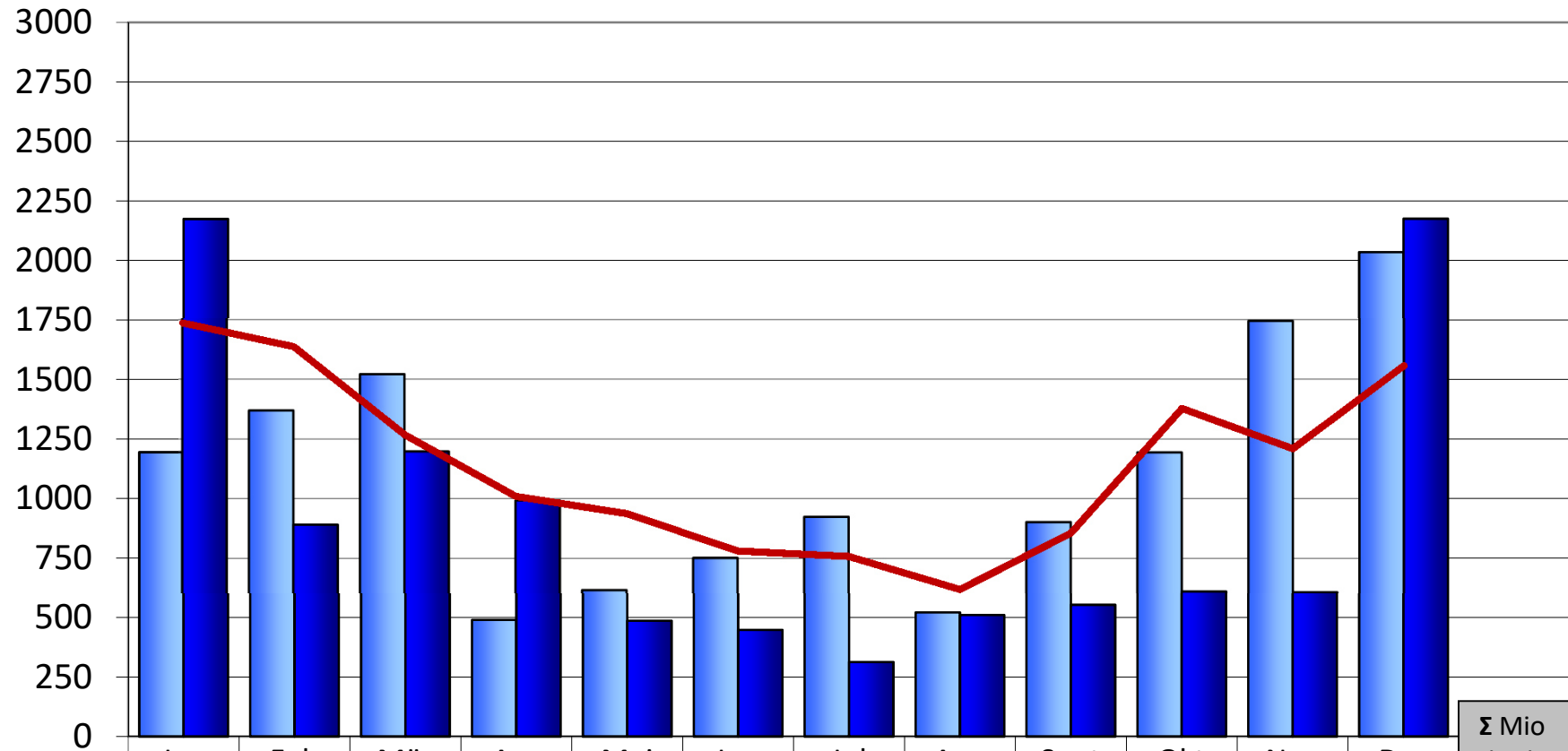


regiowind Freiburg

Monatlicher Energieertrag (MWh)



| | Jan | Feb | Mär | Apr | Mai | Jun | Jul | Aug | Sept | Okt | Nov | Dez | Σ Mio kWh |
|----------|------|------|------|------|-----|-----|-----|-----|------|------|------|------|-----------|
| 2017 | 1194 | 1369 | 1521 | 490 | 616 | 751 | 923 | 521 | 901 | 1193 | 1744 | 2035 | 13,26 |
| 2018 | 2174 | 890 | 1197 | 992 | 486 | 448 | 313 | 510 | 553 | 610 | 607 | 2175 | 10,96 |
| Planwert | 1737 | 1638 | 1268 | 1010 | 938 | 781 | 758 | 619 | 855 | 1378 | 1210 | 1558 | 13,75 |