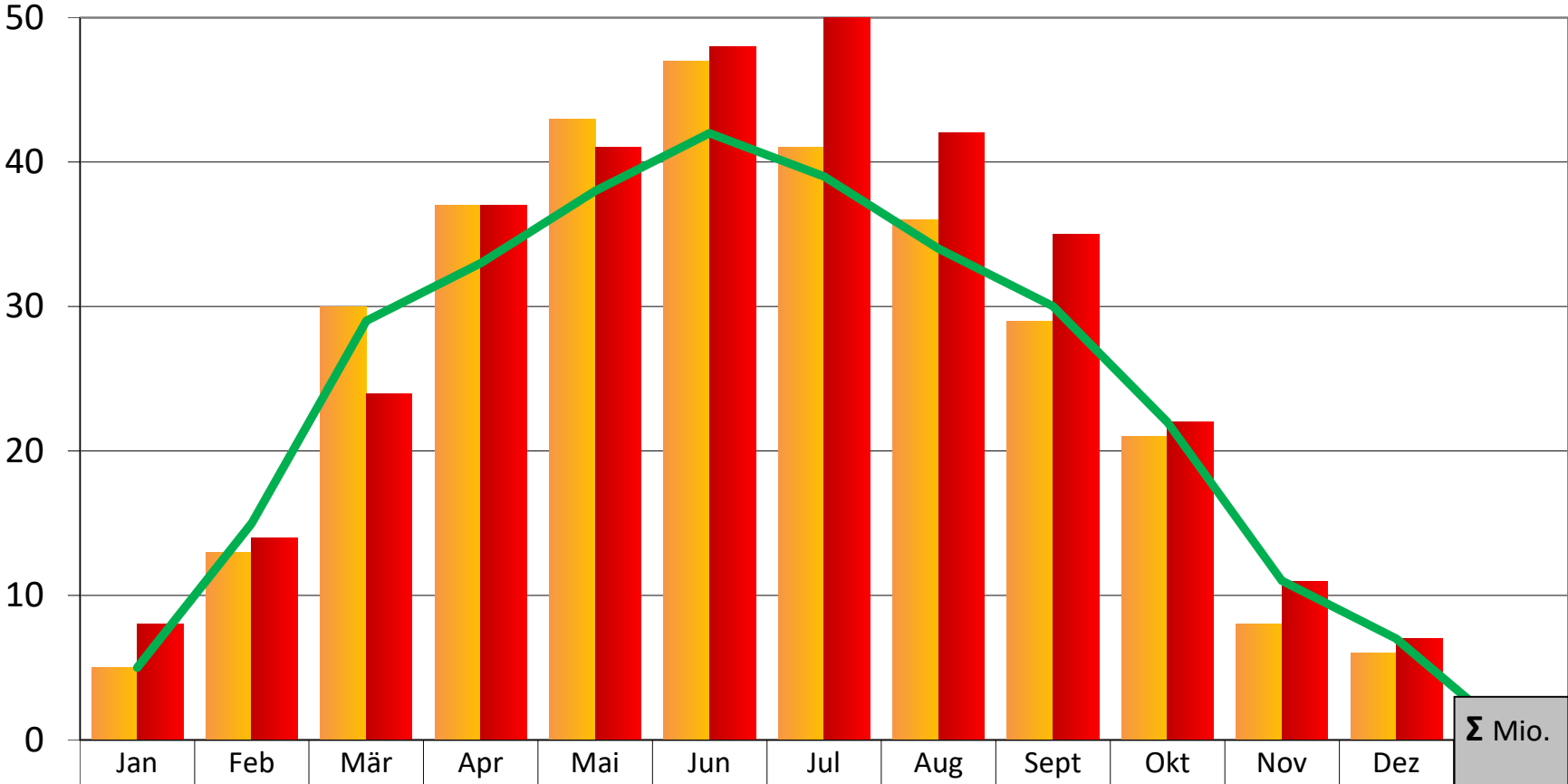


Kenzingen Regenerativ Sonne

Monatlicher Energieertrag (MWh)



2017	5	13	30	37	43	47	41	36	29	21	8	6	0,32
2018	8	14	24	37	41	48	50	42	35	22	11	7	0,34
PW ab 2017	5	15	29	33	38	42	39	34	30	22	11	7	0,31